



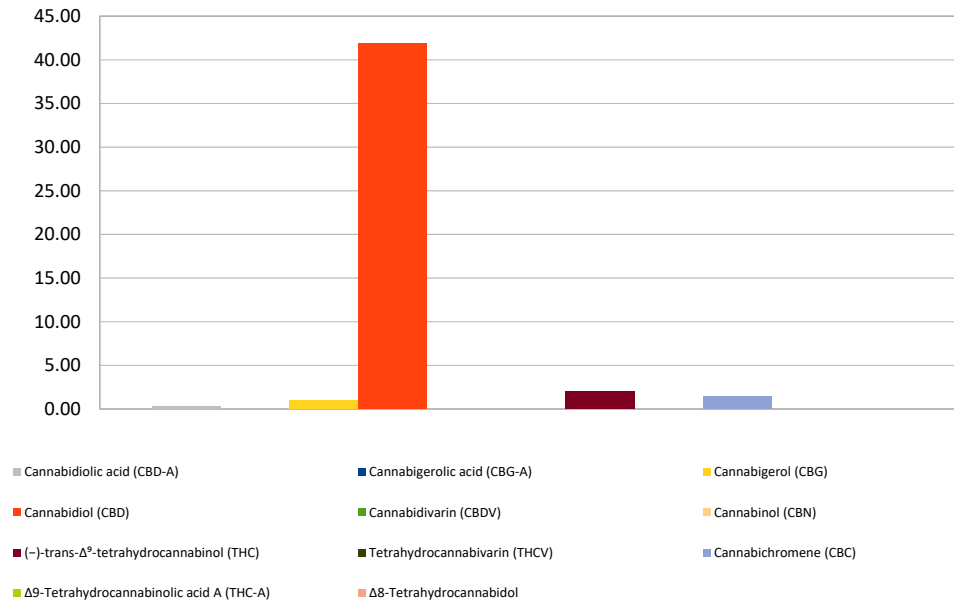
Cannabinoid Profile

Customer: Western Slope Extraction
Customer Sample ID: 102718-18012
Laboratory Number: 201811-0560
Extraction Technician: MF
Analytical Chemist: GB

Extraction Date(s):	Analysis Date(s)
11/27/2018	11/27/2018

Cannabinoid (HPLC)		Results	
	LOD (mg/g)	Percent	mg/g
Δ8-Tetrahydrocannabinol	<0.2		
Cannabidiolic acid (CBD-A)		0.03%	0.29
Cannabigerolic acid (CBG-A)	<0.2		
Cannabigerol (CBG)		0.10%	0.95
Cannabidiol (CBD)		4.19%	41.91
Cannabidivarin (CBDV)	<0.2		
Cannabinol (CBN)	<0.2		
(-)-trans-Δ ⁹ -tetrahydrocannabinol (THC)		0.20%	2.05
Tetrahydrocannabivarin (THCV)	<0.2		
Cannabichromene (CBC)		0.14%	1.41
Δ9-Tetrahydrocannabinolic acid A (THC-A)	<0.2		
Cannabinoids Total		Percent	mg/g
Max Active THC		0.20%	2.05
Max Active CBD		4.22%	42.16
T. Active Cannabinoids		4.63%	46.31
Total Cannabinoids		4.66%	46.60
Ratios			
20.62 CBD to THC		0.05 :1 THC to CBD	

Cannabinoid (mg/g)



Altitude Consulting, LLC utilizes NIST traceable Reference Standards and Certified Reference Material to calibrate analytical instruments along with proven analytical methods. The methods are applied in the most ethical manner following good laboratory practice guidelines. The results of this report are based solely on the sample submitted and cannot be reproduced.